



NATIONAL COVID-19
OUTDOOR LEARNING
INITIATIVE

CREATING
OUTDOOR SPACES

EMERGENCY
SCHOOLYARD
DESIGN VOLUNTEERS



EPIPHANY PRESCHOOL — SEATTLE, WASHINGTON

The team worked to create multiple outdoor classroom spaces to accommodate 3 preschool classes in a compact, urban setting. Working to ensure that the designs brought a sense of magic and whimsy to the classrooms with pollinator gardens, multi-functional windbreaks, and colorful overhead shelters. These elements provide protection from rainy Pacific Northwest weather, but also still allowed for the children to experience and learn from the outdoors.




 Outdoor classroom spaces studied

Image Source:
Google Maps



Epiphany Preschool Seattle, Washington

School Characteristics

Students

- 4 Preschool classrooms with 10-12 students each
- Need at least 2 outdoor classrooms for at least 6 students (50% of the class)
- Salmonberry and Huckleberry classes would be primary users of the classroom spaces

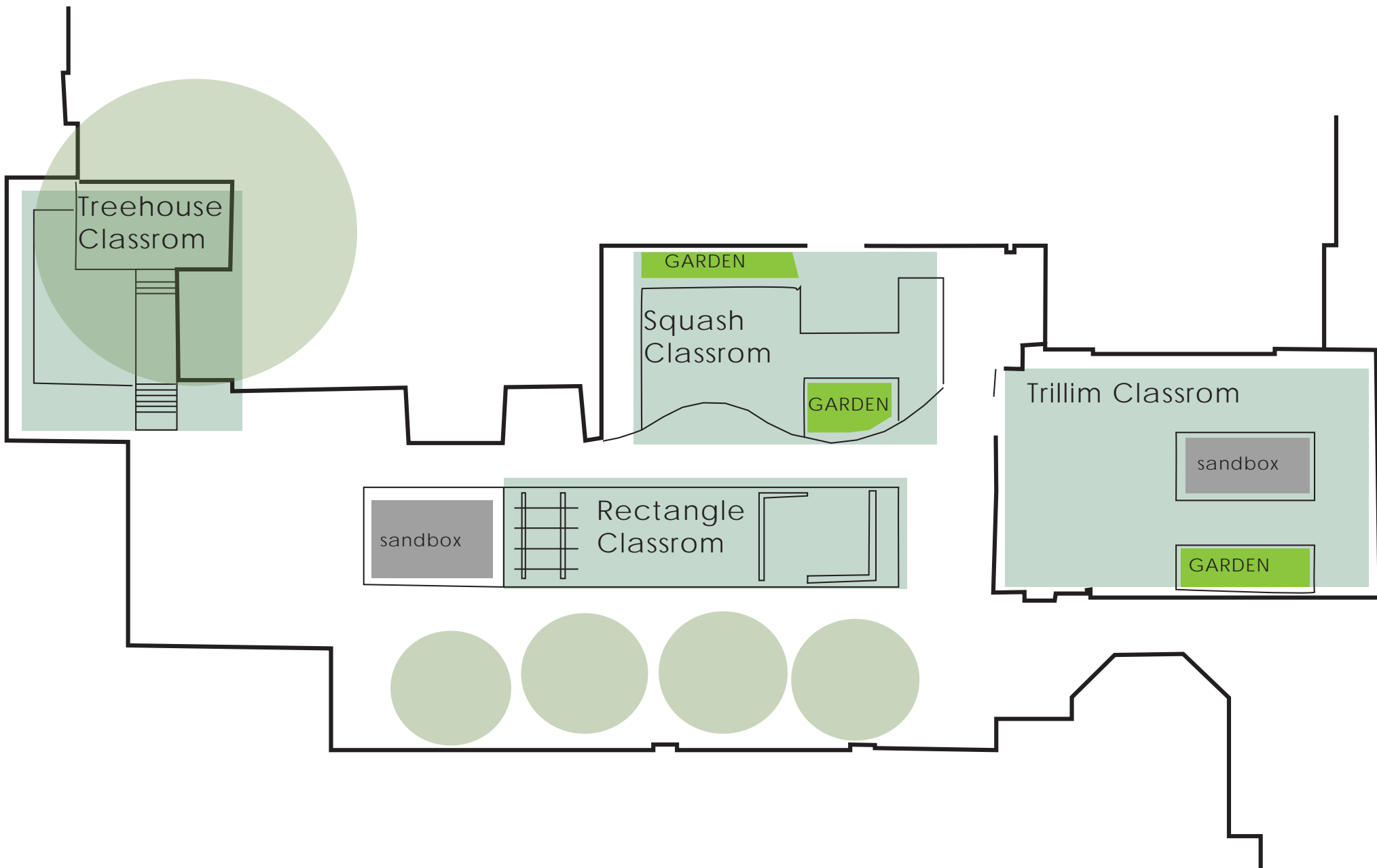
School Grounds

- Neighborhood location, school is located but unaffiliated inside of Epiphany Parish Church
- Play area and potential classroom area is the interior courtyard
- Building walls and mature trees offer a lot of shade, rain, and wind protection
- Primary areas of interest are within the courtyard, but some additional spaces can be found to the east entrance of the school

Climate

- In Seattle, the summers are short, warm, dry, and partly cloudy and the winters are very cold, wet, and mostly cloudy. Over the course of the year, the temperature typically varies from 37°F to 79°F and is rarely below 28°F or above 88°F. (*WeatherSpark*)

Design Volunteers: Sarah Bartosh
Clara Cheeves
Lauren Iversen
Jan Satterthwaite, RLA
Vireo Design Studio, llc



Epiphany Preschool
Seattle, Washington

Outdoor classroom spaces

Epiphany Preschool Seattle, Washington

Site Photos

Photographs, top row to bottom row

1. A tiered space called the Tree House has a large canopy and protection from wind with the shrubs and building. Area could benefit from additional overhead shelter and learning spaces
2. (Left) Squash grow next to the entrance of one preschool classroom. The space would benefit from both overhead and side shelter
3. The Rectangle is a flexible space that could find additional use in the fall and winter with the addition of a retractable shelter
4. A space separated by a fence has some rain protection from an overhead breezeway. This space it utilized by the Trillium classroom for natural play and gardening. There is possibility of adding additional overhead shelter

Images from Clara Cheeves and Lauren Iversen



Potential Outdoor Classroom Areas

Use planter boxes to create a separated outdoor classroom

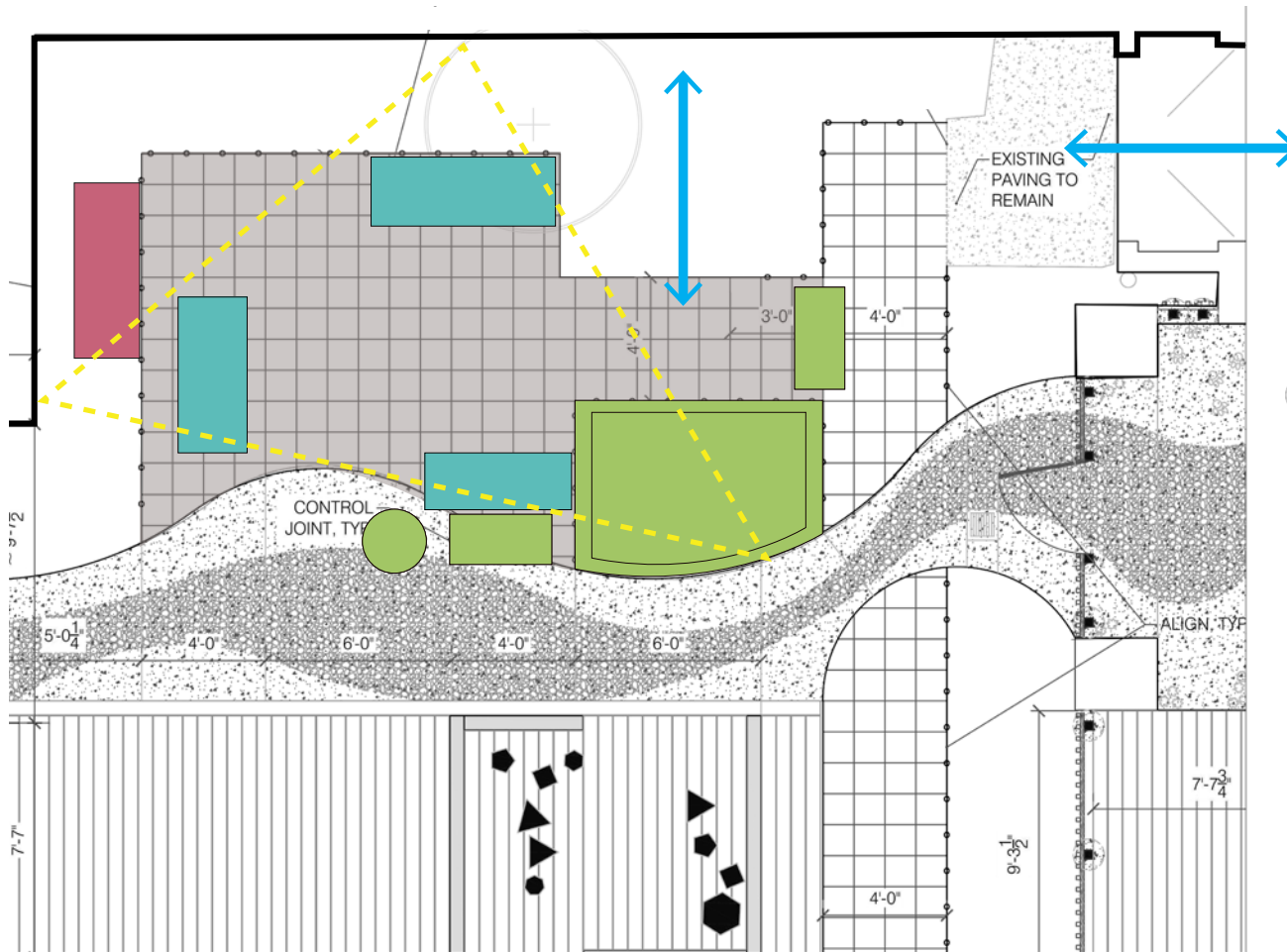


Image Source:
Epiphany Schools



Epiphany Preschool

Seattle, Washington

#2 Squash Garden

Climate Considerations

- In this corner, the building does a sufficient job at protecting students from winds. A shade sail that is attached to the building and extends into the existing garden bed is provided to protect children from rain.
- Provide planters for additional greenery in the space and to act as dividers to define the classroom space from the open play area to the south.

Climate adaptation strategies

- Use outdoor classroom when the weather is nice or in mild rain and snow. Go inside or online when too cold or harsh

Use and Augment existing infrastructure

- Utilize additional planters as gardening opportunities for children.
- Preserve the "rectangle classroom" for nature play
- Provide foldable tables for work stations so that there is increased flexibility if children are not working.

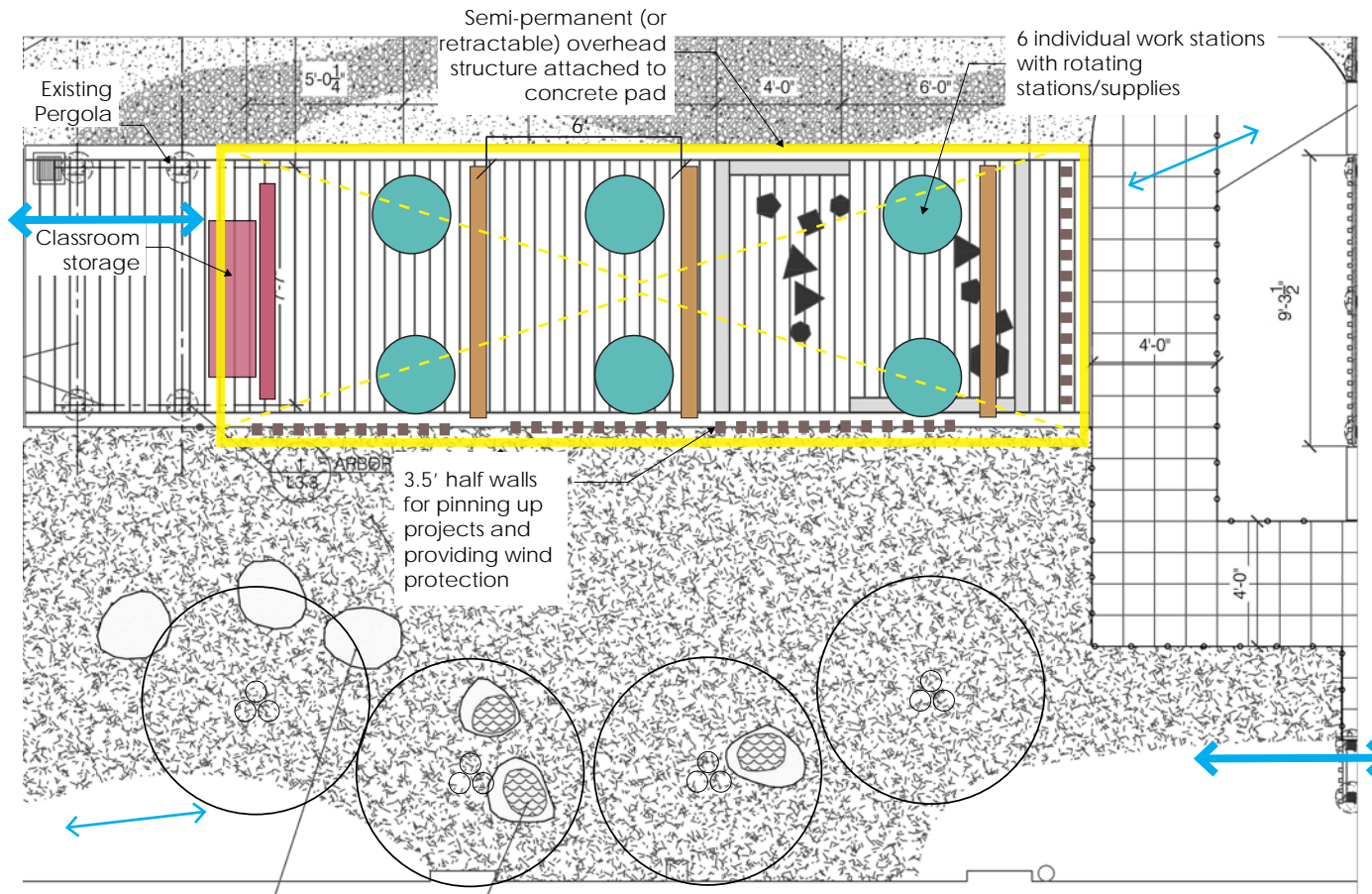
Outdoor Capacity

- Max: 6 students and 1 instructor
- Capacity: 50% of Salmonberry (or other) classroom

NOTE: These diagrams are intended to provide visual concepts to assist schools in planning. They are neither intended nor may be used for construction. Green Schoolyards America, Earth Island Institute, the Emergency Schoolyard Design Volunteers, and the partners of the National COVID-19 Outdoor Learning Initiative do not assume responsibility or liability for the technical accuracy of drawings or for any unauthorized use.

Potential Outdoor Classroom

Direct instruction and separated work spaces using existing paving



Epiphany Preschool
Seattle, Washington

#3 Rectangular Classroom

Climate Considerations

- Local climate varies seasonally
- Classes will require protection from sun, rain, and snow and appropriate clothing to keep everyone warm and dry

Climate Adaptation Strategies

- Temporary walls (3-4' H) can block some wind while allowing transparency. They can be utilized as classroom pinup space or as art boards.
- Temporary overhead structures can provide rain protection in this exposed location

Use and Augment Existing Infrastructure

- Utilize rail ties as seats for students and add a row to increase classroom capacity
- Existing storage bins could be moved for close proximity to the classroom space
- Temporary walls preserve tree canopy and natural play spaces for other classrooms to use simultaneously
- Tables added to each seat may be used for work space or stations

Outdoor Capacity

- Max: 6 students and 1 instructor
- Capacity: 50% of a single class

NOTE: These diagrams are intended to provide visual concepts to assist schools in planning. They are neither intended nor may be used for construction. Green Schoolyards America, Earth Island Institute, the Emergency Schoolyard Design Volunteers, and the partners of the National COVID-19 Outdoor Learning Initiative do not assume responsibility or liability for the technical accuracy of drawings or for any unauthorized use.

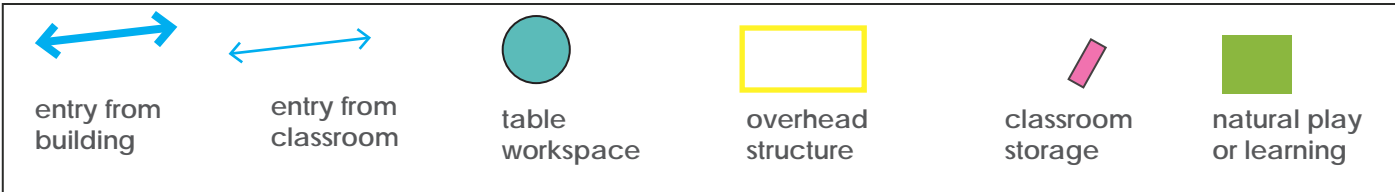


Image Source:
Epiphany Schools



Potential Outdoor Classroom

Provide Shade/Rain Tents in Same or Additional Locations for Outdoor Learning in Mild Weather, Light Rain, or Snow

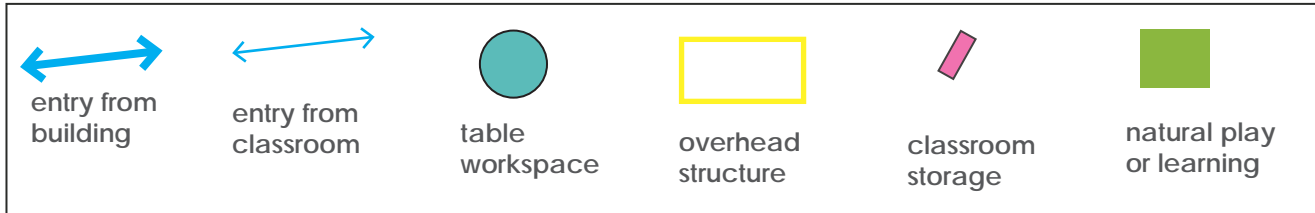
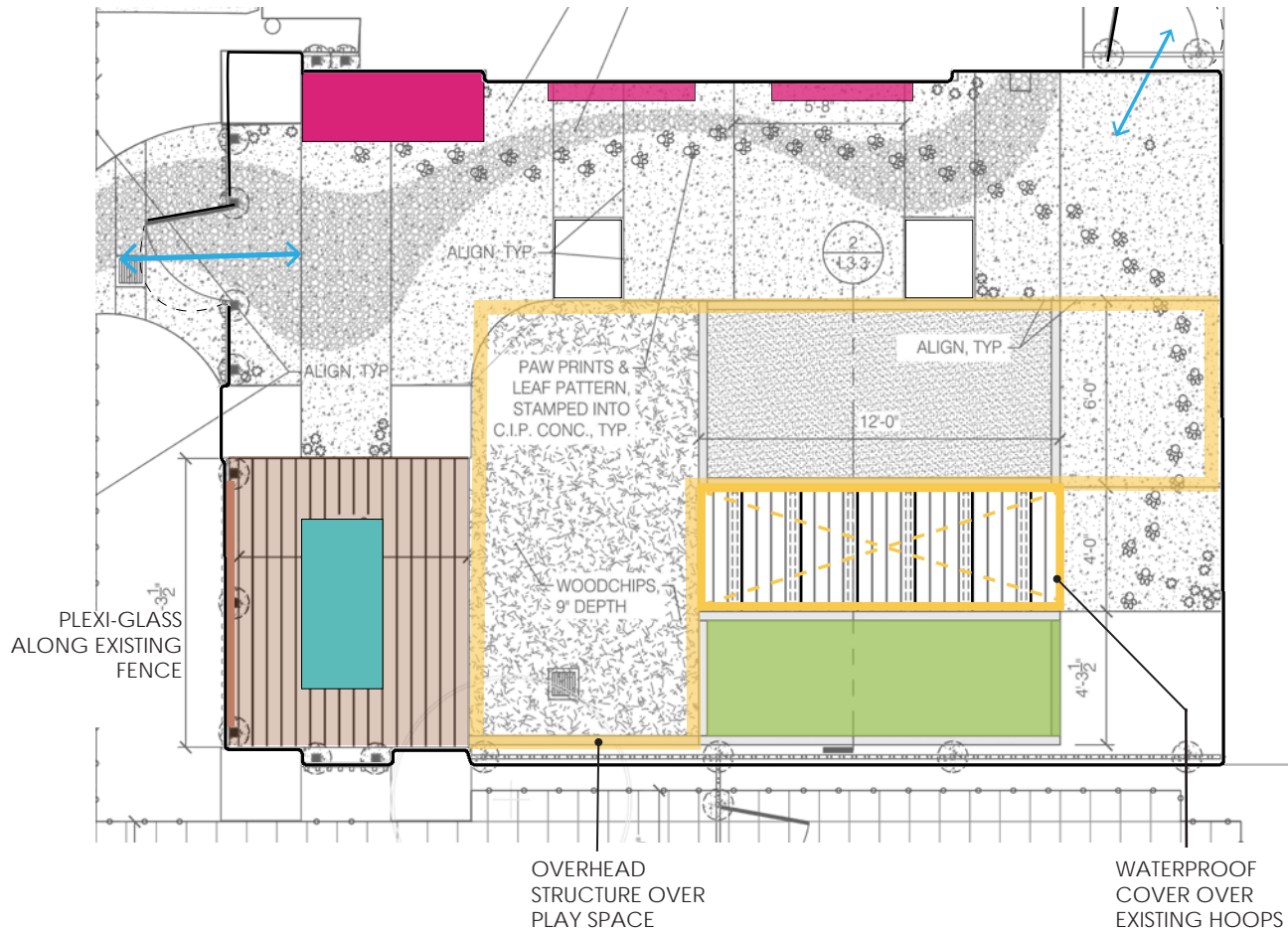


Image Source:
Epiphany Schools



Epiphany Preschool

Seattle, Washington

#4 Trillium Garden

- **LOW COST:** Plexiglass panels : help provide shelter from winds and a space for painting as well
- **GREATER INVESTMENT:** Greenhouse style acrylic panel structure: Create a structure to provide overhead protection from the elements, with the ability to open to the elements as desired.
- **LOW COST:** Cover the existing hoops with waterproof material: Creating a small, cozy space for one or two children to sit with small manipulatives or simply enjoy listening to the rain fall overhead.

Outdoor Capacity

- Max: 6 students and 1 instructor spread in the Trillium Garden area
- Capacity: 50% of Trillium students

NOTE: These diagrams are intended to provide visual concepts to assist schools in planning. They are neither intended nor may be used for construction. Green Schoolyards America, Earth Island Institute, the Emergency Schoolyard Design Volunteers, and the partners of the National COVID-19 Outdoor Learning Initiative do not assume responsibility or liability for the technical accuracy of drawings or for any unauthorized use.